

Gold Gulch Thompson Canyon Ride



Mileage: about 9 miles

Interactive Map: <https://caltopo.com/m/0U07L>

Geospatial PDF Map: <https://caltopo.com/p/1HPK1>

Relevant USGS maps: NM Eagle Eye Peak, & Burro Peak

Directions for Silver City: Take NM Hwy 90 about 23.5 miles south of Silver City, and turn west onto Gold Gulch Road. The road is sandy but suitable for trailers. Drive about 4+ miles to a parking area on the left that can accommodate maybe three rigs. Although rutted and bumpy, the parking area makes a loop for relatively easy in and out.



The Loop: Unload, saddle up, and turn left onto Gold Gulch Road, heading west. In about a half mile, the road crosses a wide wash where Gold Gulch Road and Tyrone Road intersect. Bear right to take Tyrone Road and continue for about 1.19 miles to a cattleguard where you'll pass through a gate on the left. After the cattleguard, ride another 1.19 miles to a second cattleguard. Before the cattleguard, on the right is the obscure entrance to trail 4089H, protected by a wire gate. (Unless some good citizen or Forest Service worker has cleared the way, you might have to hunt through the weeds along the fence line to find the trail sign and the gate.)

After the 4089H gate, the trail proceeds to the right, downslope along a sandy wash for nearly two miles back to Tyrone Road. Look for a break (might be a gate now) in the fence across Arrastra Gulch. Turn left onto Tyrone Road and ride back the way you came to your trailer, which will be on your right in about 2-1/2 miles.

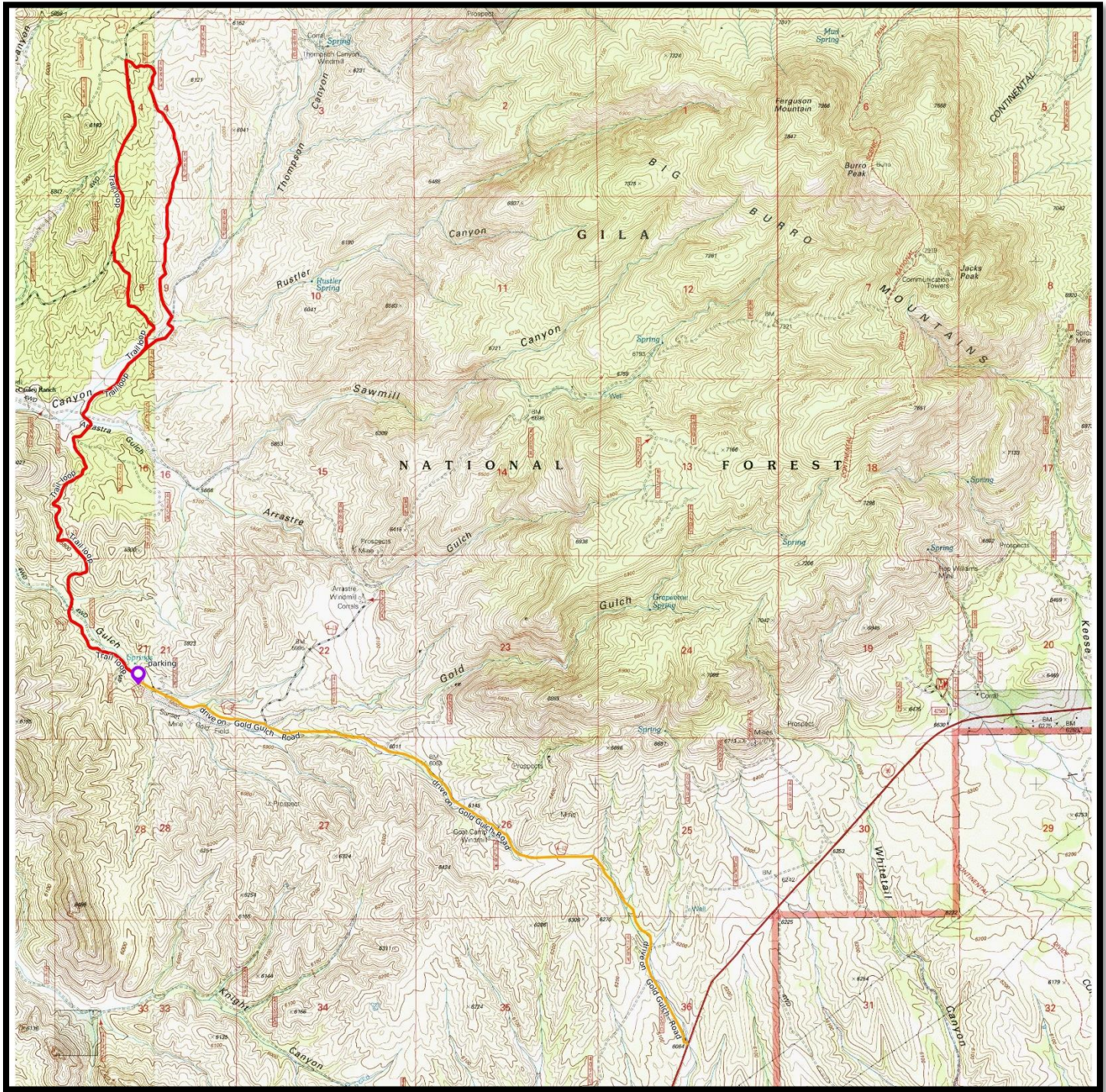




Notes: This loop is described counterclockwise; however, clockwise reportedly has extra views. However, if hikers explore this route, they may enjoy counterclockwise for easier hiking downhill through the wash.

Why we like this ride: A short and sunny excursion for winter riding, distant from crowds, traffic, and just about everything else. Provides shelter from the wind along roads with little traffic, although you might encounter a ranch truck or an ATV. Trail 4089H has sandy footing and moves easily through boulders, pinon, juniper, and cottonwoods. The trail is not marked except at its entrance and can produce a few false leads. The route challenges GPS skills, but if you pay attention and don't mind a hiccup or two, it's a pleasant ride that roughly parallels the sizeable Arrastra Gulch. The ascents and descents are gentle. The scenery is soothing. This is an easy ride for horses in reasonable shape and for riders who don't expect desert terrain in New Mexico to be like Central Park in New York City. Would be good as a winter conditioning exercise.





Map Key: Red line is the loop. Yellow line is the drive on Gold Gulch Road. Purple marker is the parking area.

Thanks, Cindi DeCapiteau, for providing the trail information.