

Gila Chapter

Back Country Horsemen of New Mexico | MINUTES

4/16/2024 6:00 PM | Grant County Extension Office

Meeting called by	Matt Rehani	Attendees
Type of meeting	Monthly business meeting	Joan Bacon, Cindi deCapiteau, Gerry Engel, Dave Imler, Rawlings Lemon, Matt Rehani, Cheryl Roth, John Walton (Zoom), Laurie Wlosinski
Note taker	Cindi deCapiteau	

AGENDA TOPICS

Recognize guests and new members | Presenter Matt Rehani

Welcome to John Walton, a hiker and professor who likes trail work, has joined GBCH. John donated a 42" one-person cross-cut saw, which Gerry Engel has cleaned up and sharpened. John says he's ready to go to work.

Welcome!

Approval of minutes | Presenter Matt Rehani

Minutes from the March 2024 meeting were approved. In the event that a reader of this document wants to discover the content of past meetings, copies of minutes dating back to 2020 are available at the GBCH website, <https://www.gilabch.org/meeting-minutes>. For minutes from 2019 to 2014, contact Cindi deCapiteau.

Financial & membership report | Presenter Dave Imler

WalMart shines again on the Gila BCH chapter, with some \$2,000 in two donations. The Gila chapter also received a memorial donation of \$195, honoring Dixie Dexter, from the Silver City Wacky's (the card that accompanied this generous donation appears on page 5). Other income consisted of the return of the chapter's \$250 deposit for use of the Grant County Convention Center during our January festivities (apparently we cleaned up after ourselves). Expenses were modest in the interim between the March GBCH meeting and tonight's gathering—Dave paid out \$376.50 for insurance. Bank balances were as follows:

\$46,256.84 in checking

\$50,139.18 in savings

GBCH proudly boasts 45 members, some of whom showed up tonight and all of whom will be welcomed at future meetings.

Agenda topic CDT Days | Presenter Matt Rehani

The first of the Gila Chapter's public appearances is at hand. Matt Rehani reported that several people have signed up to volunteer at our booth during the Continental Divide Trail Days event on Saturday, April 20, at Gough Park. If you haven't made plans to attend this vibrant annual hurrah for CDT, make your plan now. You'll be glad you did.



As always, the Gila Chapter will be helping kids, their parents and other visitors make cookies—slabs of pine logs onto which they get to use smoking hot branding irons to scorch the CDT logo onto their very own slab (the



cookie). We will also provide information about the Back Country Horsemen. You can share your GBCH trail experience with a grateful public and help get the word out about the work we do and how much we enjoy it. Gerry Engel has designed an improved log stabilizer for use during cookie preparation, so Doug Dexter won't have to throw his weight onto the logs anymore.

The GBCH booth is on the south side of Gough Park, across from the big parking lot on E. 12th Street between Pope and Main Streets.

<https://continentaldividetrail.org/trail-days-2024/Give>

Action items

Person responsible

Supply weights (sand bags? Big rocks?) to hold down the canopy	Rawlings Lemon
Provide the canopy, logs, sawhorse, propane tank and heater, branding irons, cross-cut saw, tarp or other cover to protect clothing against sap and char from the logs	Gerry Engel
Provide handouts, flags, table	Cindi deCapiteau
Provide posters, brochures, banners, photos	??? (whoever has them...)
Provide donation jar	Laurie Wlosinski
Provide donation recording sheets and take photos of them before GG staff picks them up hourly	Dave Imler, Nancy Imler

Give Grandly | Presenter Rawlings Lemon, Cheryl Roth

After the CDT Days party (described above), our second public appearance this year is the in-person event for Give Grandly, part of an annual fundraiser for non-profit organizations in Grant County, supported by The Grant County Community Foundation.

The cheerful volunteers for these groups assemble at the Main Street Plaza, 700 N. Bullard Street, in downtown Silver City. Join in on the fun, food, music, and opportunity to make a charitable donation to our community.

Gerry Engel and Melissa Green will represent GBCH with a 3-5 minute radio speech.

The GBCH booth will be staffed by our members (and we hope to see you there) from 9:00 a.m. – 2:00 p.m. on Saturday, May 4. GBCH is scheduled to set up our booth between 8:30 and 9:00 and we can use your help! We have also agreed to help with take-down for our booth and the booths of other organizations when the event closes after 2:00.

Note that online donations to Give Grandly open on April 20 and continue for a while beyond that date.

Matt Rehani noted that 10 or 12 volunteers have signed up to staff the booth, but of course every GBCH member is encouraged to show up.

<https://222.givegrandly.org>

Action items

Person responsible

Print and supply donation forms	Cheryl Roth
Provide canopy, logs, sawhorse, propane tank and heater, branding irons, cross-cut saw, tarp, or other cover to protect clothing against sap and char from the logs	Gerry Engel
Provide handouts, flags, table	Cindi deCapiteau
Provide posters, banners, brochures, photos	??? (whoever has them...)
Provide donation jar	Gerry Engel
Provide weights for canopy	Rawlings Lemon

Round-up at Silver City Food Co-op | Presenter Matt Rehani

Remember to shop at the Silver City Food Co-op this month. GBCH is the recipient of the change rounded up to the nearest dollar for a patron's purchases there for the entire month of April. Matt will post a reminder on Facebook.

Action items

Person responsible

Post a reminder about the Co-op Round-Up on Facebook	Matt Rehani
--	-------------

Public Service | Presenter Gerry Engel

Joan Bacon is just back from trail project in Jordan Canyon, and on the Green Fly to San Martin. Joan commented that a badly burned area exists near Burnt Corral, but she knows how to get around it. Get details from Joan.

The next project is along Wood Haul Wagon Road, north of Ft. Bayard (map on page 6). Gerry was up there recently and reports that only five trees are down across the trail; as a result, the plans to use horses up there have been cancelled. Hikers will camp up on the pine-covered flat area at the top of the steep and deeply rutted stony section up the mountain a short distance from the trail head on the Wood Haul Road and beyond the fence line past the wagon wheel ruts. Packers will haul in baggage and equipment for the ground crews—and then haul the stuff out when the project ends.

Donna Tillmann and Cheryl Roth have completed significant logging along the trail, but there's always more work to do.

A prescribed burn is taking place now on Cameron Creek, so just stay out of there for the next week or so.

Oliver Green reports a 40" log across the trail Trotter Trail toward White Creek (map on page 7), as well as another on the Gila West Fork and one on the trail to Hells Hole (map on page 8). Horse people need to know about these because they're really hard to get around.

A project coming up is from Aeroplane Mesa to Quentin Spring (map on page 10) (Gerry advises that horse people should stay at Quentin Spring.) Under consideration are various locations on the Lilly Park trail in which the Forest Service is interested, such as from Lilly Park down the Trotter Trail to the switchbacks. It's possible that the Conservation Corps could do the tread.

Adding a couple more pens at Woody's Corral is in the works (as noted in previous minutes), but Gerry doesn't have any news to report on that. Oliver Green (a mover and shaker at the Gila Cliff Dwellings) says the Forest Service is ok to provide water for the new pens. Gerry commented that NM Game & Fish also has to weigh in about the project, but we have no information from them. Gerry noted that when the new corrals are being built, the facilities at Woody's won't have to close.

Grant County SAR update | Presenter Russ Imler, Laurie Wlosinski

Rescue work is ramping up, just as Laurie Wlosinski predicted last month. There was a significant mission in Rabb Park (map on page 9) Dave hiked four miles on the Rabb Canyon trail for a woman from Albuquerque who wanted to rehab herself. The steep trail and the elevation were too much for her. She was carried out on a litter by six or seven GBCH folks and a dozen or so firefighters. Unfortunately, the firefighters were badly equipped, wearing cowboy boots and they had no water, no food, no flashlights. As a result, Russ Imler is coordinating a meeting with fire department to set up protocols for assisting search and rescue. Russ and Andrea Imler saved the day.

Grant County SAR received another call for overdue kayakers in the Middle Box. The kayakers showed up so mission didn't happen.

More wilderness traffic is expected as the hiking season heats up, but the Border Patrol is already picking up dehydrates to the south. Grand Enchantment Trail, which runs from Phoenix to Albuquerque, is attracting many hikers into the Gila.

State BCH Update | Presenter Joan Bacon, Cheryl Roth

Debby Spikerman is new president of BCHNM. Chapter representatives will meet on May 6, 2024, to hear a report of the recent BCHA meeting in Casper, Wyoming and to discuss the 2024 Rendezvous, which the Gila chapter will host.

BCHNM has received a grant that can help market the work the NM chapters do; we should be able to share in the wealth—maybe for a new chapter brochure.

A recent post on Facebook from the BCH chapter in Flathead, MT noted that the last of BCH's four founders, Roland Cheek, passed away peacefully in his sleep April 13. The post features an interesting YouTube piece (<https://www.youtube.com/watch?v=m27V3z8Bid8>) that gives a history of how BCHA originated. The video describes rebuilding a deteriorating bridge in Bob Marshall Wilderness across one of the Salmon Forks crossings.

Gerry shared an idea to get grant money for a video about GBCH and what we have done in the last 20 years (the chapter cleared 186 trail miles in last year alone). He suggested a film presentation at the Silco to help recruit younger members. John Walton commented that people would volunteer from Las Cruces and environs if they knew about us. Gerry will talk to Melissa about writing up a grant proposal to get the necessary funds. Gerry has also proposed radio spots to let people know what's going on.

The matter of charging fees for the public to use campgrounds has not developed legs just yet, although there's an Enchantment Pass (<https://www.krqe.com/news/new-mexico/us-forest-service-rolls-out-first-statewide-recreation-pass-in-new-mexico/>). A new Gila forest plan has been around for a while, but is not evolving.

Action items

Person responsible

Look for grant money to produce a Gila Chapter video

Gerry Engle, Melissa Green

Announcements |

Next Meeting: Tuesday, May 19, 6:00 p.m. Grant County Extension Office

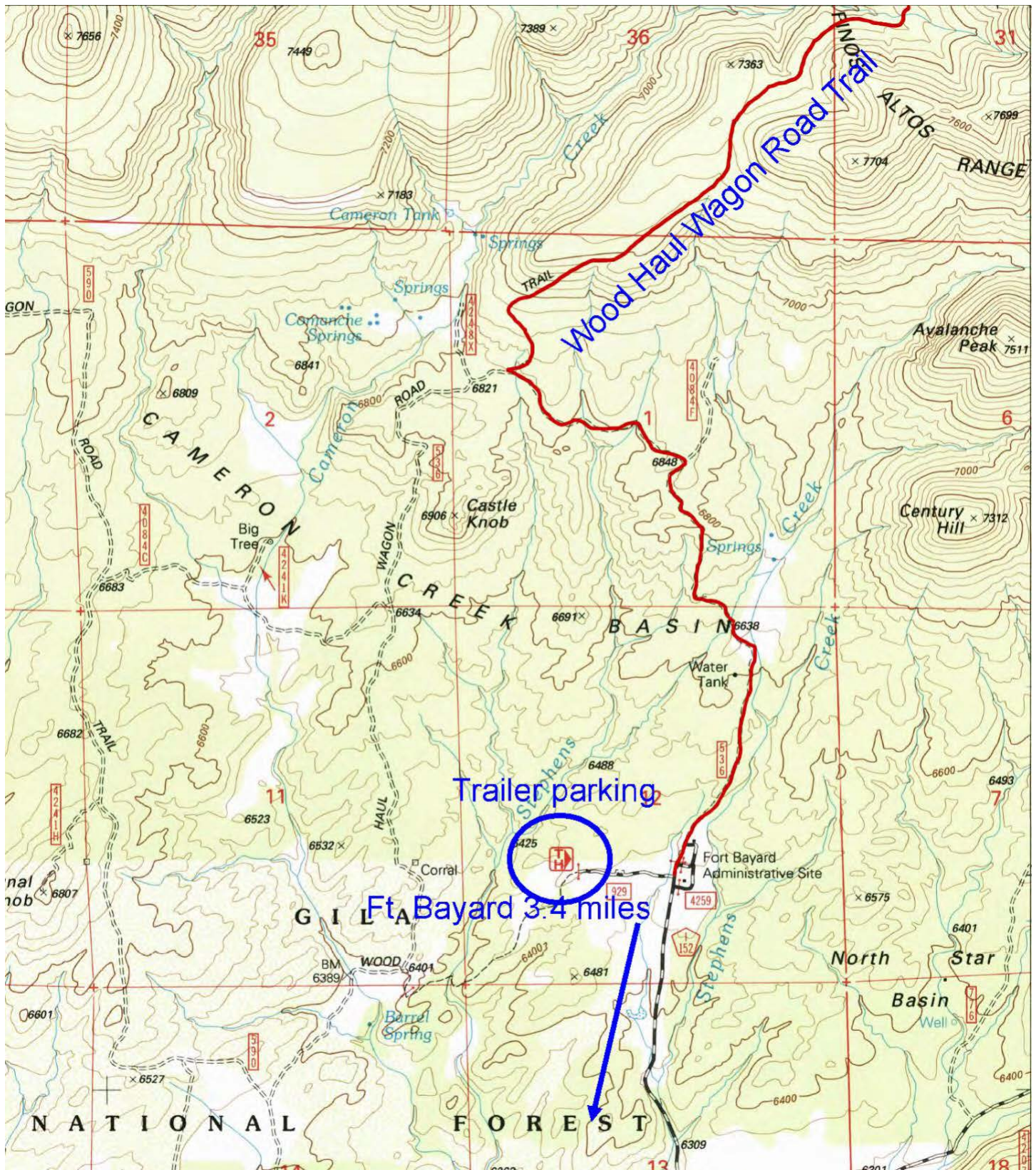


DEAR SIR OR MADAM,
PLEASE ACCEPT THIS DONATION IN
MEMORY OF DIXIE DEXTER. WE
(SILVER CITY WACKY GROUP) LOVED HER
VERY MUCH & SHE'S MISSED...
THANK YOU FOR ALL YOU DO
FOR NEW MEXICO...

SINCERELY,
SILVER CITY WACKY'S
NANCY RIVERA,
TREASURER

2340 HWY. 180E, #188
SILVER CITY, NM 88061

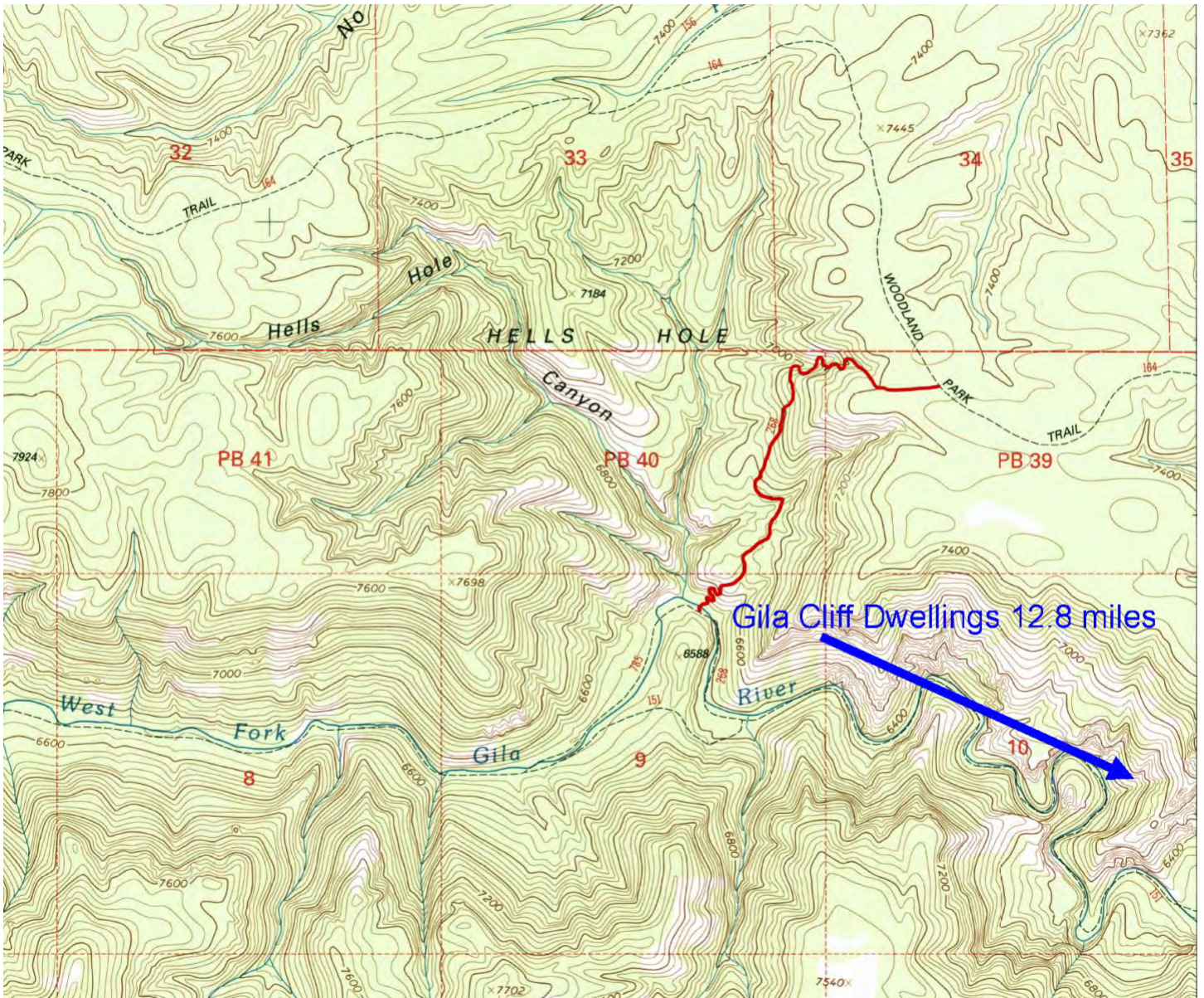
Wood Haul Wagon Road Trail (source: 1999 USGS Ft. Bayard map)



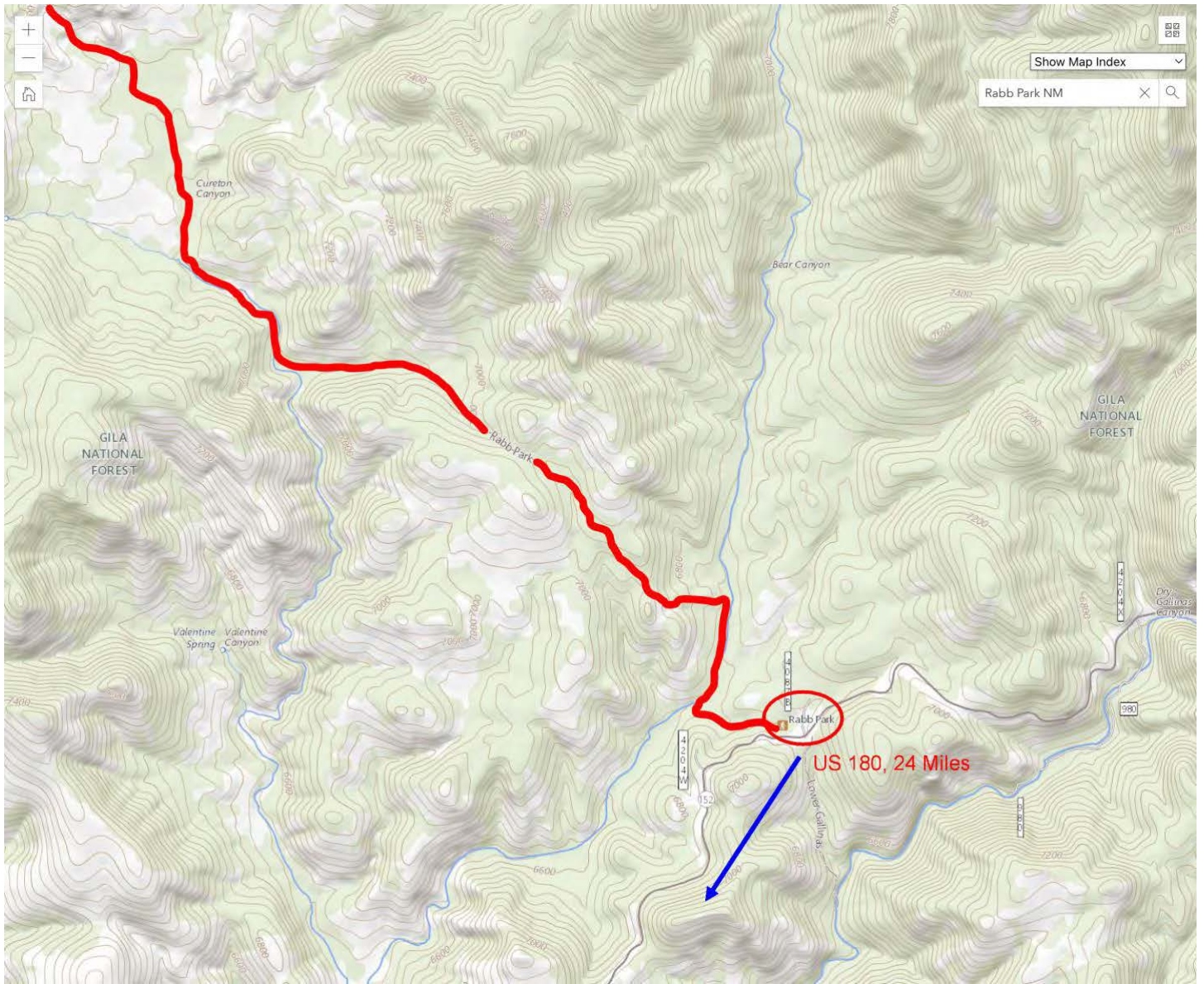
Trotter Trail (source: 1999 USGS Lilly Mountain map)



Hells Hole Trail (source: 1999 USGS Lilly Mountain map)



Rabb Park Trail (source: USGS 1999 Hendricks Peak map)



Aeroplane Mesa to Quinton Spring (sources: USGS 1999 Loco Mountain and Lilly Mountain maps. Mileage from Caltopo.

