

# Gila Chapter

## Back Country Horsemen of New Mexico | MINUTES

---

5/21/2024 6:00 PM | Grant County Extension Office

Meeting called by	Matt Rehani	Attendees
Type of meeting	Monthly business meeting	Cindi deCapiteau, Gerry Engel, Dave Imler, Nancy Imler, Rawlings Lemon, Matt Rehani, Cheryl Roth, Donna Tillmann
Note taker	Cindi deCapiteau	

### AGENDA TOPICS

---

*Call to order | Presenter Matt Rehani*

As the May business meeting was getting underway at 6:12 p.m., Donna Tillmann described the mechanisms of Equine protozoal myeloencephalitis (EPM). This is a neurological disease that horses can get from eating infected opossum feces. Donna has found EPM in two horses she's acquired recently (both of which came from Texas) and finds the treatment arduous and of questionable efficacy.

---

*Recognize guests and new members | Presenter Matt Rehani*

No new members or guests attended the meeting tonight. In fact, five of the seven members who attended were members of the GBCH board of directors. Where is everybody else?

---

*Additions or changes to agenda | Presenter Matt Rehani*

No changes were requested to the agenda, although if more members were present, such requests might have been offered.

---

*Approval of minutes | Presenter Matt Rehani*

The April 2024 minutes were approved by all seven members present.

---

*Financial & membership report | Presenter Dave Imler*

In the bank account as of the date of this meeting:

- Checking: \$51,371
- Savings: \$50,150

Income:

- 2024 Continental Divide Trail Days, \$45
- Silver City Food Co-op Round-up, \$941
- Donations from individuals, \$1,260
- Give Grandly tip jar, \$640

Expenses:

- Trail projects, \$22,931.18
- Workers' compensation, \$931

The chapter still has 45 members, most of whom were not present at tonight's meeting.

---

**Agenda topic** Recap of CDT Days and Give Grandly | **Presenter** *Matt Rehani*

Both of these public events went really well. We received two sheets of names from people who want to volunteer with us. The Give Grandly site reports donations received from 27 people and the event netted the chapter \$2,893.20, which includes \$630 on site donations as well as \$500 from the Grant County Foundation. Dave expects to receive a check in a month or so. Matt Rehani promised to send Dave a list of the donors from Give Grandly.

Somebody (Cheryl?) noted that a visitor at Give Grandly asked where he could get a GBCH T-shirt, which led to a discussion about ordering shirts and hats to sell at public events, especially the Rendezvous to be held at Ft. Bayard this coming September. No decision was reached about this, however.

---

**Action items**

**Person responsible**

Provide a list of Give Grandly donors to Dave.

Matt Rehani

Consider ordering GBCH merchandise and direct action at a future meeting

Matt Rehani

---

**Gila Centennial Celebration** | **Presenter** *Matt Rehani*

The Gila's wilderness and forest lands are 100 years old this year. On Saturday, June 1, 9:00 a.m. – 4:00 p.m. a centennial celebration will be held at Gough Park and GBCH will participate. The setup for the event will be similar to those of CDT Days and Give Grandly. Our application has been submitted and approved, but so far we have no information about logistics and setup times. Matt and the usual crew have volunteer to staff the booth. Watch your email for details.

---

**Action items**

**Person responsible**

Distribute email about Gila Centennial details.

Matt Rehani

---

**Discuss summer picnic options** | **Presenter** *Matt Rehani*

Traditionally, the Gila chapter holds an annual picnic in July at the Gomez Peak Pavilion. The pavilion costs \$48.00 plus fees and tax to rent and is available on a day the members present found acceptable, so the picnic will occur on Tuesday, July 16, 2024, beginning at 4:00 p.m.

Attendees should bring a potluck dish. The chapter supply paper plates, water, tea, tablecloths, utensils. Our hiker volunteers will be invited, as well as a representative(s) from the Forest Service. Melissa should extend an invitation to the hikers.

---

**Action items**

**Person responsible**

Extend picnic invitation to hikers

Melissa Green

Extend picnic invitation to the Forest Service and suggest a presentation (perhaps the upcoming Gila Centennial)

Matt Rehani

---

**Public Service** | **Presenter** *Gerry Engel*

The Trotter trail (map on page 4) has a big log blocking the path, as well as 20 logs up on top. The recent project on the Jerky Mountain trail (map on page 5) was successful; the trail had not been cleared since 2009. The crew of 12 people who worked on the project hiked a hard 12 miles and did a lot of work.

See [https://www.gilabch.org/files/ugd/867f2f\\_b4550b31294a4096924e64cac98b22ca.pdf](https://www.gilabch.org/files/ugd/867f2f_b4550b31294a4096924e64cac98b22ca.pdf) for more information .

---

*Grant County SAR update | Presenter Dave Imler*

A group of hikers called in that one of their members was missing. The missing person was found lounging in the Gila Hot Springs, safe and sound.

---

*State BCH Update | Presenter Joan Bacon, Cheryl Roth*

**Rendezvous at Ft. Bayard.** The Rendezvous registration form and information have been distributed to the New Mexico chapters (see page 6). More plans and activities surrounding the GBCH sponsorship of the 2024 Rendezvous will take place. Your assistance will be welcomed and needed.

---

*Announcements |*

Next Meeting: Tuesday, June 18, 6:00 p.m. Grant County Extension Office

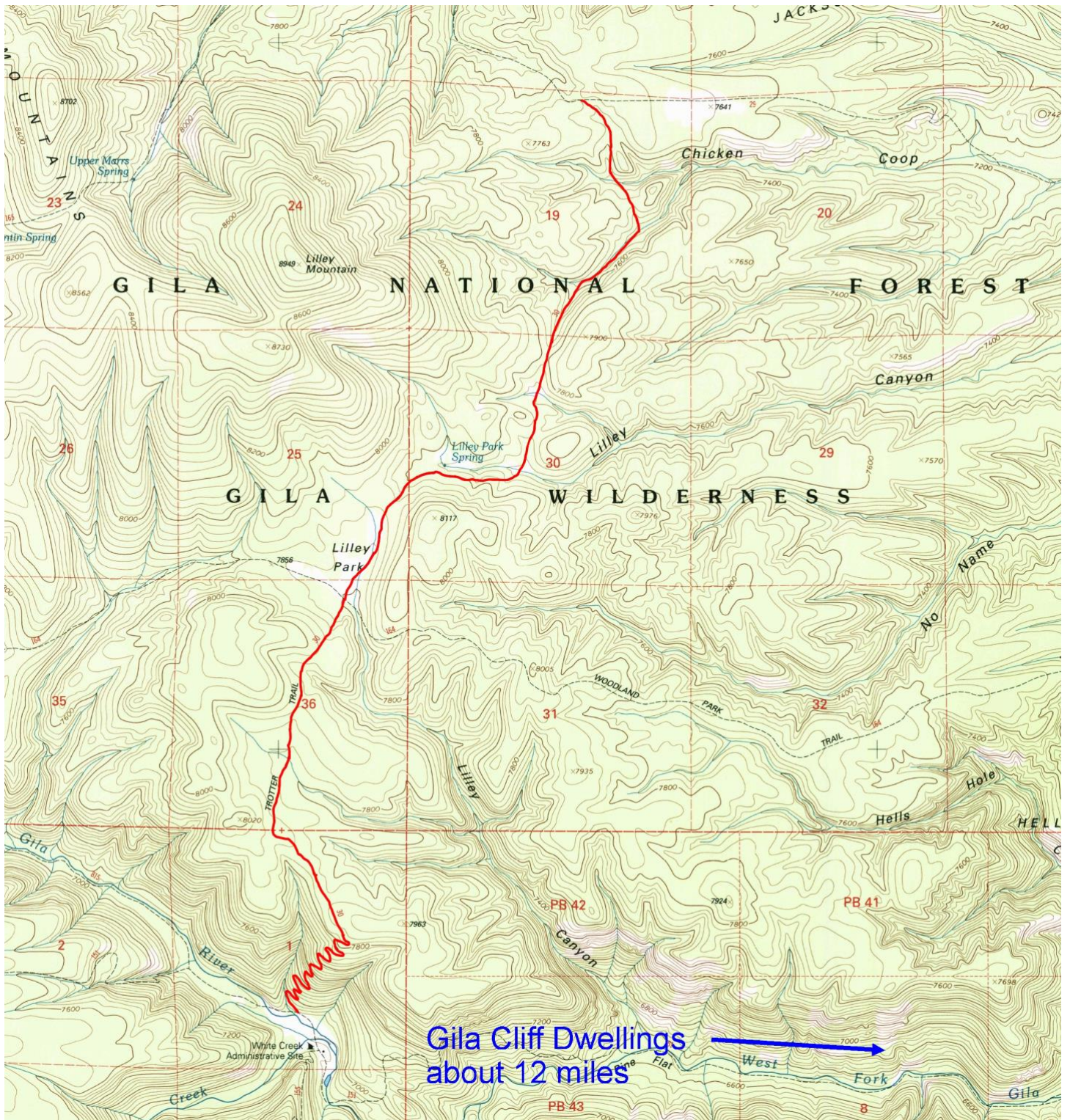
Dave Imler plans to take a ride (no trail work) from Woody's Corral. His tentative plans are to go at the end of June or the first of July. He will announce the actual dates as his plans firm up.

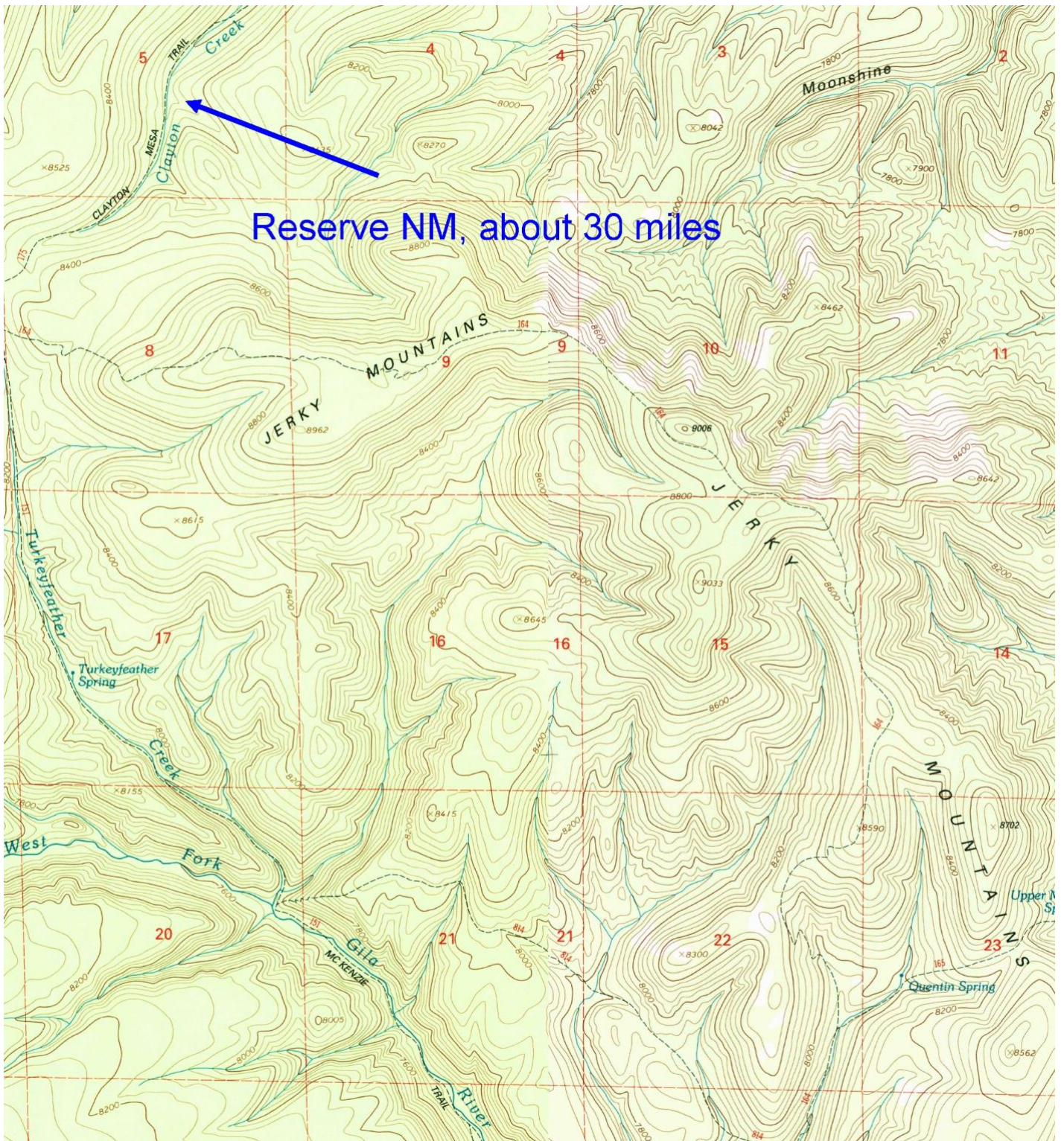
A couple of chapter members are working on a new brochure to extoll the virtues of the Gila BCH. At the moment, the text is heavy on trail work, but we also do recreational stuff (New Year celebration, summer picnic, fun rides). That stuff needs to be included in the brochure.

GBCH meeting attendance is way down. Would it help to have speakers at each meeting?

<b>Action items</b>	<b>Person responsible</b>	<b>Deadline</b>
Work up non-trail work information for the GBCH brochure.	Cindi deCapiteau	Right away
Send out information about fun ride from Woody's Corral	Dave Imler	
Find out of GBCH members would attend meetings more often if we featured speakers	Cheryl Roth	

Trotter Trail, #30. Source USGS 1999 Lilly Mountain and Woodland Park Trails







**2024 RENDEZVOUS**  
**BACK COUNTRY HORSEMEN OF NEW MEXICO**  
**HOSTED BY THE GILA CHAPTER**  
 Ft. Bayard National Historic Landmark  
 26 Calle El Centro  
 Santa Clara NM 88026

**THURS. SEPT. 19 - SUN. SEPT. 22, 2024**

**REGISTRATION FORM**

LAST NAME: \_\_\_\_\_ CHAPTER AFFILIATION: \_\_\_\_\_

FIRST NAME(S) (use reverse to add more names): \_\_\_\_\_

MAILING ADDRESS: \_\_\_\_\_ CITY: \_\_\_\_\_ ZIP: \_\_\_\_\_

PHONE: \_\_\_\_\_ CELL: \_\_\_\_\_ EMAIL: \_\_\_\_\_

**REGISTRATION FEE: \$40.00 PER PERSON** Number of participants \_\_\_\_\_ x \$40 = \$ \_\_\_\_\_ The fee includes non-electric camping, water for horses, toilets. You will need to bring electric fencing, panels, or other means to secure your equine(s), potable water for your own consumption, and buckets for your equine(s). There is no dump station on site, but a nearby KOA has one and will charge a fee for the service.

**SCHEDULE AND ACTIVITIES:**

Thurs. 19th	Noon	Arrive (parking patrol will direct you to a space) Check-in at the Theater
	5:00 pm – 8:00 pm	Appetizers in the theater, meet and greet, speaker from Santa Clara
Fri. 20th	All day	Continue check in and purchase raffle tickets
	10:00 am - 4:30 pm	Turn in chapter auction items Group rides Ft. Bayard tour
	5:00 pm – 8:00 pm	Forest Service speaker
Sat. 21 <sup>st</sup>	10:00 am - 4:30 pm	Group rides
	4:00 pm - 5:00 pm	Set up dinner and silent auction
	5:30 pm - 6:30 pm	Dinner in the theater Complete silent auction
	6:30 pm	State meeting Finish raffle and other fundraisers
Sun. 22 <sup>nd</sup>	6:00 am - 8:00am	Coffee and donuts in the theater
	9:00 am	Short rides (optional) in the morning, clean-up, load-up, and check-out.

**Please bring your own chairs and buckets (for equines).**  
**You are responsible for cleaning up your campsite. A dumpster for manure and trash will be provided.**  
**BCHNM policy: Stallions, dogs, cats, and other pets are not permitted on rides.**  
**Groups are limited to ten riders or fewer, but no one rides alone.**

**Liability Waiver**

I/We realize inherent risks are involved in all activities with equines. I/We hereby release BCHNM and its Officers, Directors and Membership, BLM, the village of Santa Clara, and the United States Forest Service from liability for any accident, injury, or death that may occur to myself/ourselves or my/our equine by participation in any Back Country Horsemen of America activity. In accordance with EQUINE LIABILITY ACT [42-13-1 NMSA1978).

I/We further understand that I/We are fully responsible for our minor children and release BCHNM of any and all liability for any accident, injury, and/or death of any minor child. Children under the age of eighteen (18) years are not allowed to participate in any BCHA activity unless accompanied by a parent or legal guardian.

Signature of adults and/or guardians: \_\_\_\_\_  
 (Signature) (Signature)

Registration must be received by September 8, 2024

Make checks or money orders payable to: Gila BCH of New Mexico

Mail registration and fee to: Gila BCH, PO Box 533, Silver City NM 88062



## 2024 RENDEZVOUS

### BACK COUNTRY HORSEMEN OF NEW MEXICO

HOSTED BY THE GILA CHAPTER

Ft. Bayard National Historic Landmark

26 Calle El Centro

Santa Clara NM 88026

THURS. SEPT. 19 - SUN. SEPT. 22, 2024



# Welcome!

### *Information about the 2024 BCHNM Rendezvous.*

The Rendezvous is an annual event hosted by a selected chapter of the Back Country Horsemen of New Mexico. The members of the Gila chapter are honored to host the 2024 event, which will be held at Ft. Bayard, in Santa Clara, New Mexico.

### **Registration**

The Rendezvous registration form is included with this document. Please fill it out completely and use the blank side to supply names of additional participants.

Mail the form to:       Gila BCH  
                                  PO Box 533  
                                  Silver City NM 88062

Your registration form and fees must be received by September 8, 2024. Make checks payable to Gila Back Country Horsemen.

### **About Ft. Bayard**

Fort Bayard was established in 1866 to protect travelers and settlers from interference by Apache Indians along a stagecoach trail that ran from Arizona into New Mexico. The fort was garrisoned by the "Buffalo Soldiers," US Army regiments composed primarily of African Americans, formed during the 19th century to serve on the American frontier.

Following the end of the Apache wars in 1886, Fort Bayard's continued usefulness came under scrutiny and the fort was subsequently deactivated. However, U.S. Army Surgeon General George Miller Sternberg, noting the excellent health record of the post, chose Fort Bayard as an Army tuberculosis hospital and research center.

The State of New Mexico took control of Fort Bayard in 1965. In 2001, the fort became an Historic District and in 2004 Fort Bayard was designated a National Historic Landmark. The Village of Santa Clara now has a 99-year lease on the Ft. Bayard grounds. Santa Clara has undertaken a plan to establish the property as an historical park that serves visitors to the Silver City area. Santa Clara's authorization of the BCHNM 2024 Rendezvous is part of that effort.

Santa Clara does not charge a fee for the use of its Fort Bayard grounds, but please donate to thank the village for the use of its great facility.

Beyond Ft. Bayard's northern border is the Gila National Forest, which provides access to numerous scenic trails that traverse an area of three million acres of public forest and wilderness.

### **Things to Do**

Visitors to Ft. Bayard have opportunities to learn about western history, to appreciate the work of a robust art community, hike, ride horses or bicycles on a trail system that explores territory both gentle and rugged. Much of the territory in the Gila Forest operates under US Forest Service vehicle restrictions, but the main route north (Ft. Bayard Road) leads to trail heads and vehicle parking.

In addition to recreational trails, the park also affords a frisbee golf course, museum, the Ft. Bayard National Cemetery, and the Bataan Memorial Park, which features a playground, baseball diamonds, and a pole-mounted helicopter.

Note that Ft. Bayard is a public space and will not be exclusive to the Rendezvous. Be aware that non-Rendezvous people will be using the trails for hiking, running, and horse riding. You will find a high degree of courtesy among the other visitors that will inspire you to return friendly greetings and consideration. Rules about the rights-of-way for horse users are well-known and respected.

The town of Silver City is the headquarters for the Forest Service's Silver City District and is the Grant County government seat. Western New Mexico University lies on the west end of town and offers education in the technical trades and liberal arts. Silver City also has a post office, convention center, the Murray Ryan Visitor Center, several banks, laundry facilities, auto repair and trailer services, diesel and gas fuel stations, a WalMart, and shopping for animal feed, groceries, electronics, and (best of all) the works of local artists.

The Silver City Museum explores the diverse history and culture of southwestern New Mexico. Western NM University's museum in Fleming Hall features an extensive collection of ancient Mimbres pottery.

Gough Park is a city-block-sized area of trees and lawn grass, with restrooms and nearby parking. The Big Ditch is a waterway that splashes between Hudson and Bullard Streets and is a refreshing place to hide from a hot day and to watch birds and squirrels frolic. A variety of restaurants and refreshments are provided on Bullard Street, as well as Our Paws' Cause, a big thrift store for the High Desert Humane Society.

If you attend the Rendezvous with family and friends who will not be riding, Silver City has much to offer, so nobody needs to be bored and restless.

### **Rendezvous Facilities**

During the Rendezvous, we will have access to the Fort Bayard Theater for indoor restrooms (no showers) and a large gathering space for meals and meetings. The Rendezvous will provide a large dumpster for manure and trash, as well as strategically located troughs and water for horses. You need to supply your own potable water, however.

Santa Clara is not charging us for camping, but offers no hookups for water, sewer, or electricity, so be prepared for primitive camping with trailers and equines. There is no dump station at Fort Bayard, but a nearby KOA has one, for which you will be charged a usage fee.

### **When You Arrive**

Ride headquarters are located in the Ft. Bayard Theater (see map). Please check in there to register and receive directions to your camping spot. Volunteers will be available to help park your rig and set up your campsite and secure your animals.

### **Securing Your Equines**

No pens, shelters, or hitch rails are available at Fort Bayard, but there are trees for highlines and plenty of space for panels, electric fences, or picket lines. You can also tie your equines to your trailer. Equines must be contained in one of these ways; hobbles alone are not sufficient.

### **Bring With You**

- Extra toilet paper
- Buckets for your equines
- Table (optional)
- Chairs
- Personal item to sell at your site; 10% of proceeds to BCHNM (saddle, headstall, blanket, western art, whatever you want to sell)
- Please bring an appetizer to share in the Theater on Thursday evening.

### **Group Meals**

Appetizers and ride sign-up sheets will be on hand for the meet-and-greet on Thursday evening in the Theater. You provide your own dinner. On Friday, dinner is on your own, but you are welcome to bring your food to the Theater to socialize. Saturday will feature a catered dinner, and on Sunday morning we will offer coffee and donuts.

### **Do's and Don'ts**

- Dogs must be on leash at all times unless confined to a cage or trailer
- Stallions are not allowed
- Campfires are permitted at the blacktop at north end of the campsite. You must supply fuel and a fire ring



- Weed-free hay not required
- Cell service is available
- But most of all, DO have fun!

**Fundraisers**

The Rendezvous is a fundraising event for the Back Country Horsemen of New Mexico and the Village of Santa Clara. You will have several opportunities to donate and participate in the fun.

- Silent auction: Each chapter provides an item for the silent auction. All proceeds to BCHNM.
- 50/50 Raffle: Individuals purchase raffle tickets and receive 50% of proceeds if their ticket is drawn, with 50% BCHNM.
- Guess how many cookies in the jar: Individuals can purchase a chance to guess the number of horse treats in a jar. Fifty percent of proceeds to BCHNM; you keep the rest.
- Guess the horse’s weight: Two equines will be presented so you can purchase a chance to guess its weight. Fifty percent of proceeds to BCHNM and you keep the other 50%.
- Personal sales: Individuals can bring items to sell at their campsites. Ten percent of the proceeds to BCHNM and you keep 90%.
- Donation jar for Santa Clara. All proceeds go to the Village of Santa Clara in appreciation for our use of its Ft. Bayard facilities.

**Farrier and veterinarian**

A farrier will be available (at your cost) for shoeing and hoof emergencies. Glen Geesaman 575-313-9998

There are three veterinarian practices in Silver City. Treatment is available for both large and small animals.

**Maps**

Maps of Ft. Bayard and its recreational trails are included with this document. The maps will also be available at the ride headquarters (in the Ft. Bayard Theater), along with a map of Silver City.

**Clean-up**

All participants must maintain a clean campsite. Leave your site in the same or better condition as you found it. Place trash and manure in the dumpster provided.

**Directions**

From the north: I-25 to exit 41 at Hatch. Head south on New Mexico Highway 26 to the T intersection near Deming at US Highway 180 (about 48 miles). Turn right on 180 for about 50 miles to the second light past Bayard and follow signs to ride headquarters.

**Caution:** Along I-25 are signs that indicate a route to Silver City via NM Highway 152. Don’t fall for it. The route climbs a mountain range over Emory Pass by way of a narrow and twisty road that is difficult for trailers and large rigs.

**Rendezvous Schedule**

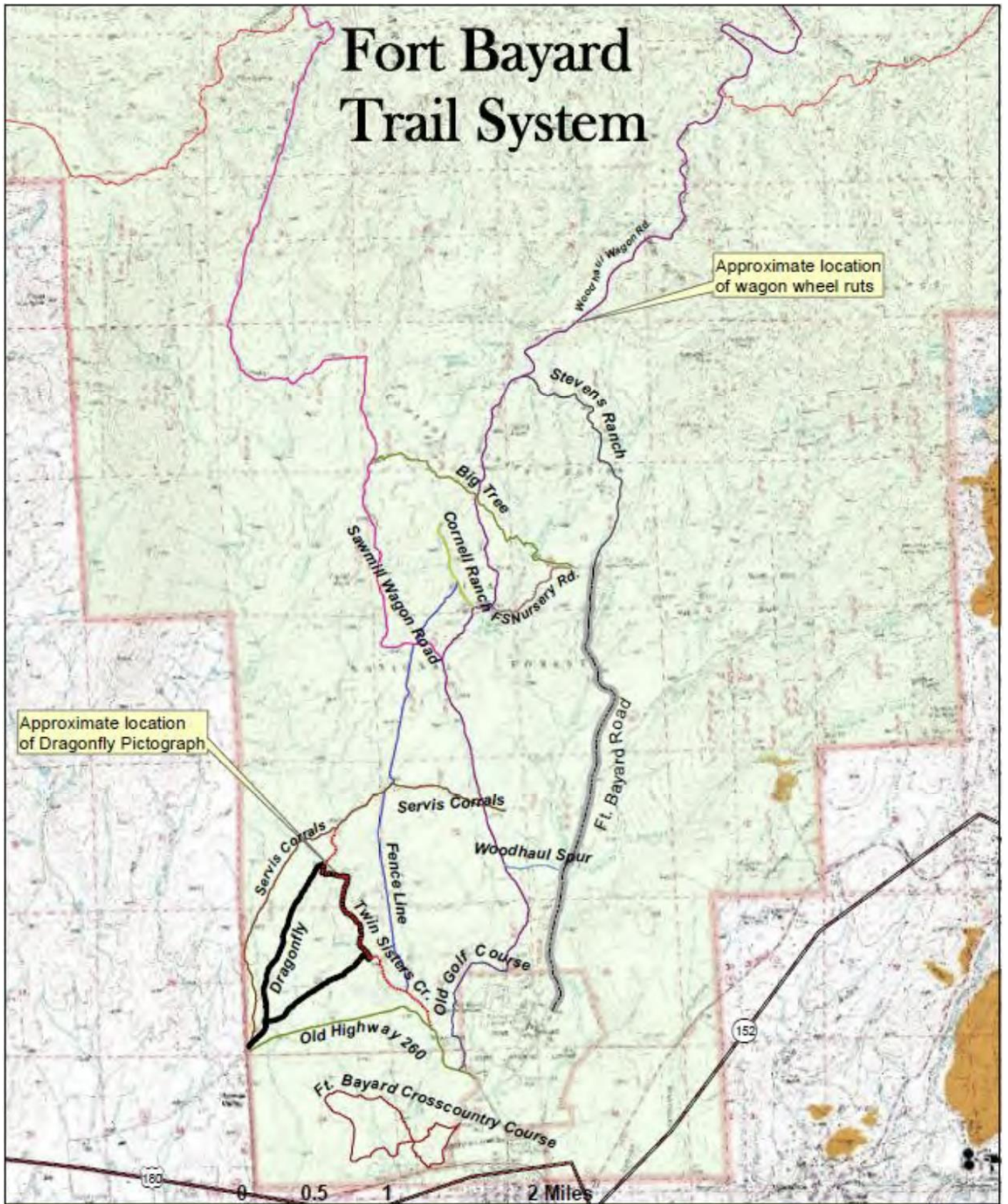
Thurs. 19th	Noon - 5:00 p.m.	Arrive Check in at Ride Headquarters in the Ft. Bayard Theater The Ride parking patrol will direct you to a campsite and a place to secure your animals After you get settled, relax, tour the facilities, or ride on your own (see Ft. Bayard Trail map, on page 6)
	5:00 p.m.	Trail bosses will describe the trail rides they will lead (in the Theater) Sign up for rides Appetizers in the theater, meet and greet, discuss fundraisers Speaker: Santa Clara Speaker/Mayor and/or Administrator

Fri. 20th		All meals on your own
	All day	Sign up for Friday rides
		Continue check in and purchase raffle tickets
	9:30 am - 4:30 pm	Turn in silent auction items
		Group rides
		Ft. Bayard tour
	5:00 pm - 8:00 pm	Dinner on your own in the Theater
		Participate in fundraisers
		Sign up for Saturday rides
		Forest Service speaker
Sat. 21 <sup>st</sup>		Breakfast and lunch on your own
	9:30 am - 4:30 pm	Group rides
	4:00 pm - 5:00 pm	Set up dinner and silent auction
	5:30 pm - 6:30 pm	Dinner in the theater
		Complete silent auction
	6:30 pm	State meeting
		Finish raffle and other fundraisers
Sun. 22 <sup>nd</sup>	6:00 am - 8:00am	Coffee and donuts in the theater
	9:00 am	Short rides (optional, on your own) in the morning, clean-up, load-up, and check-out.

Map of Ft. Bayard



# Fort Bayard Trail System



## Ft. Bayard Trails:

- |                              |                                |                                     |
|------------------------------|--------------------------------|-------------------------------------|
| — Big Tree Tr No 755         | — Dragonfly Loop Tr No 720     | — Woodhaul Spur Tr No 55C           |
| — Woodhaul Wagon Rd Tr No 55 | — Twin Sisters Creek Tr No 726 | — Old Hwy 260 Tr No 260             |
| — Stevens Ranch Tr No 756    | — Fence Line Tr No 727         | — Old Golf Course Tr No 723         |
| — Forest Nursery Tr No 757   | — Servis Corrals Tr No 725     | — Ft. Bayard Crosscountry Course Tr |
| — Cornell Ranch Tr No 758    | — Sawmill Wagon Rd Tr No 243   | — Forest Boundary                   |



## Fort Bayard Trail System - Day Use Only

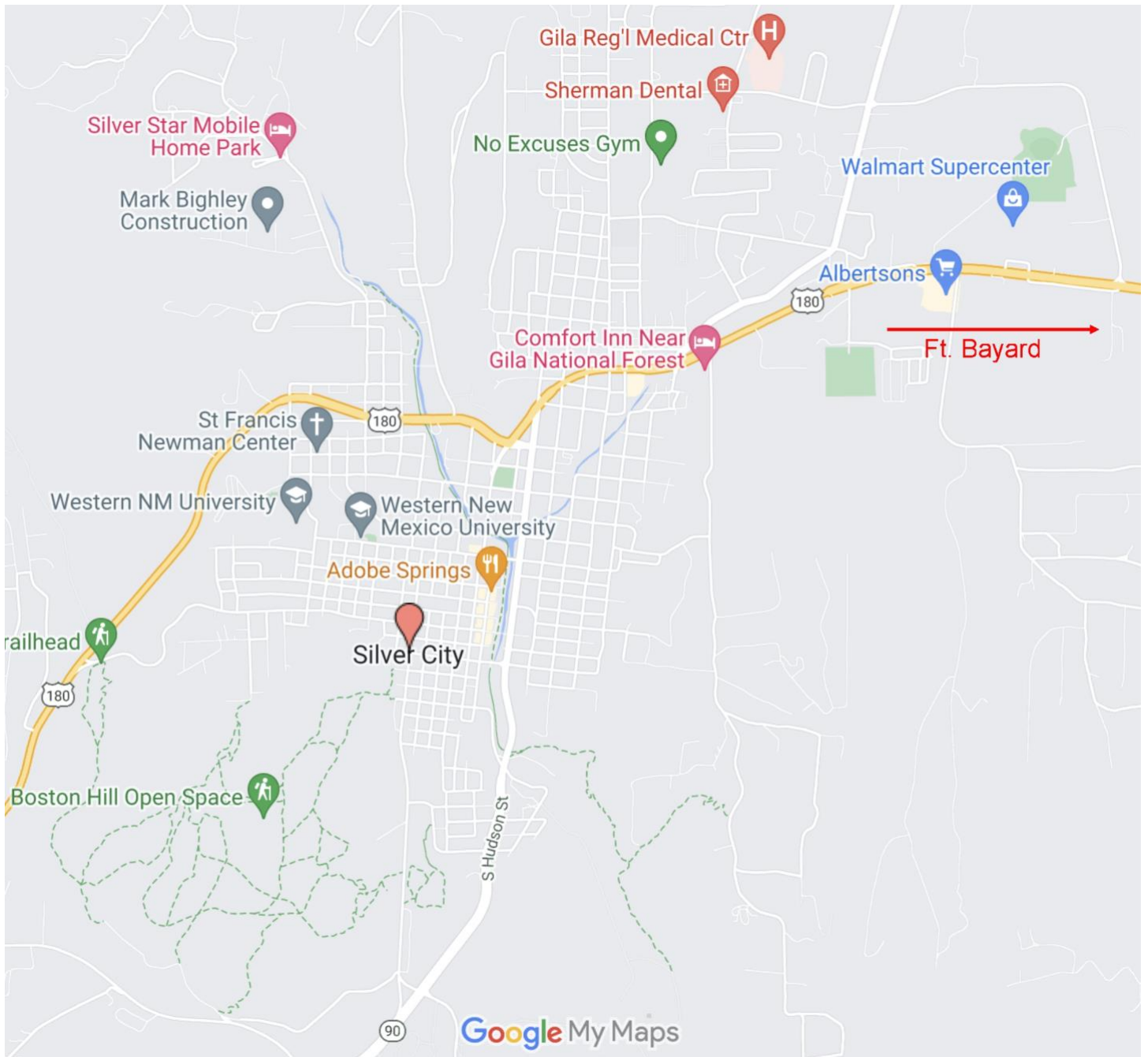
TRAIL NAME	NO.	MILEAGE	LEVEL	DESCRIPTION
BIG TREE TRAIL	755	2 MILES	EASY	Varied landscape, popular trail but still sense of openness, popular destination being Big Juniper Tree
WOODHAUL WAGON RD. TR.	55	11.5 MILES	MODERATE TO DIFFICULT	One leg of various loops from Big Tree Trailhead. Connects to Signal Peak Trail system. Popular destination: old wagon wheel ruts just north of junction with Stevens Ranch Trail No. 756.
SAWMILL WAGON RD. TRAIL	243	7 MILES	MODERATE	One leg of various loops from Big Tree Trailhead. Connects to Continental Divide Trail system.
FOREST NURSERY RD. TRAIL	757	¼ MILE	MODERATE	Old route taken by wagon to water nursery plants from Cameron Creek. Popular route with cyclists and equestrians.
STEVENS RANCH TRAIL	756	2 MILES	MODERATE	Old service road used to access water system for old Fort Bayard. One leg of various loops from Big Tree Trailhead. Heavily wooded in some locations. Wildlife sightings are common on this route.
CORNELL RANCH TRAIL	758	¼ MILE	MODERATE	Short trail that connects Sawmill Wagon Rd Trail to Cameron Creek. A possible leg for a loop to Big Tree Trail.
DRAGONFLY LOOP TRAIL	720	3 MILES	MODERATE	Very popular loop accessed by Dragonfly Trailhead in Arenas Valley. Popular destination: various pictographs at Dragonfly site. Water often found in Twin Sisters Creek.
OLD HWY 260 TRAIL	260	2 MILES	EASY	Wide easy hike from the Dragonfly Trailhead. Asphalt roadbed from old highway leads to Twin Sisters Creek. One leg of a loop with Twin Sisters Creek Trail. Gradual altitude gain means nice vistas of Old Fort Bayard, game refuge, and surrounding mountains.
TWIN SISTERS CREEK TRAIL	726	2 MILES	MODERATE	One leg of a variety of loops from Dragonfly Trailhead. Varied landscape weaving in and out of the Twin Sisters Creek drainage. Often water found in Twin Sisters Creek.
FENCE LINE TRAIL	727	2.5 MILES	DIFFICULT	Steep, sometimes rocky trail that forms one leg of a variety of trails. Original trail was formed by cattle and horse traffic along the pasture fence line. Consistent sun exposure making a good winter trail route.
SERVIS CORRALS TRAIL	725	3.25 MILES	MODERATE	Trail that leads to the Servis Corrals – named for Sam Servis. Servis worked on the Gila NF from 1952 – 1967. He spent a lot of time out at Fort Bayard with the FS horses and mules, and they were kept in the Antelope pasture. This trail forms one leg of a variety of loops originating at Dragonfly Trailhead.
WOODHAUL SPUR TRAIL	55C	1/3 MILE	EASY	A short user-created trail that passes through open grassland and gains easy access to the Woodhaul Wagon Rd. Trail from the main Ft. Bayard Road.
OLD GOLF COUSE TRAIL	723	1 MILE	EASY	This trail circumscribes the old Fort Bayard Golf Course used by fort residents since the turn of the century when the officers and soldiers teed-off.
FORT BAYARD CROSS COUNTRY TRAIL	722	3	EASY	This trail was originally created for use by Cobre HS Indian Cross Country Team from the neighboring town of Bayard. It is exactly 3 miles long and follows a weaving route near the Bataan Memorial Park in Santa Clara. It is accessed at the back of the park.

## Fort Bayard Trail System - Day Use Only

**Note:** For more detailed trail information of the Fort Bayard Trail System and surrounding area, the following USGS topographic quadrangle maps are recommended: Fort Bayard; Twin Sisters; Allie Canyon

USGS topographic quad maps can be purchased from the US Geological Survey: <https://store.usgs.gov/> or by calling toll-free 1-888-ASK-USGS (1-888-275-8747)

# Map of Silver City



## Local Resources

### **Arenas Valley Animal Clinic**

*Skilled veterinary services for large and small animals*

11865 US 180 E

Arenas Valley, NM 88022

<https://www.arenasvalleyac.com/>

575-388-1993

### **Town and Country Veterinarian Clinic**

*High quality, thorough, and friendly service for large and small animals*

2035 Memory Lane

Silver City, NM 88061

<https://townandcountryvet.com/>

575-538-3700

### **Dr. Jenica Laney, DVM**

Mobile only

575-519-0503

### **Silver City Museum**

*Explore the diverse history and culture of southwestern New Mexico*

312 W. Broadway St.

Silver City NM 88061

<https://www.silvercitymuseum.org/387/About-the-Museum>

575-538-5921

### **Western New Mexico University Museum**

*Home of the world's largest and most complete Mimbres pottery and artifact collection*

Light Hall Theater

1000 W. College Ave.

Silver City NM 88061

<https://museum.wnmu.edu/?lang=en>

575-538-6386

### **Faywood Hot Springs (reservations required)**

*Hot mineral spring, public & private Pools a rustic natural geothermal resort*

65 New Mexico Highway 61

Faywood, New Mexico 88034

<https://faywoodhotsprings.com/>

575-342-8181

### **Gila Hot Springs Campground**

*Camping and natural hot spring pools beside the Gila River*

HC 68 Box 80 (40 miles north of Silver City on NM Hwy 15)

<http://gilahotspringscampground.com/>

Silver City, NM 88061

### **Gila Cliff Dwellings**

*Homes and lives of the people of the Mogollon culture who lived there from the 1280's through the early 1300's*

26 Jim Bradford Trail (44 miles from Silver City on NM Hwy 15)

Mimbres, NM 88049

<https://www.nps.gov/gicl/index.htm>

575-536-9461

**Catwalk Recreation Area**

A half-mile-long bridge suspended over Whitewater Creek  
5 miles from Glenwood, NM, at the end of NM Hwy 174 (Catwalk Road)

<https://www.fs.usda.gov/recarea/gila/recarea/?recid=2029>

Phone: (575) 539-2481

**City of Rocks State Park**

*A geologic formation of sculptured rock columns separated by paths or lanes resembling city streets*

327 Hwy 61

Faywood, NM 88034

<https://www.emnrd.nm.gov/spd/find-a-park/city-of-rocks-state-park/>

575-536-2800

**Cosmic Campground International Dark Sky Sanctuary**

*Offers a 360-degree, unobstructed view of the night sky for exceptional stargazing opportunities*

60 miles north of Silver City on US Hwy 180

<https://www.fs.usda.gov/recarea/gila/recarea/?recid=82479>

575-539-2481

**Murray Ryan Visitor Center**

*Pick up a Silver City Trail Map*

201 North Hudson Street

Silver City, NM 88061

<https://www.visitsilvercity.org/trail-brochure.html>

575-538-5555

**Town of Silver City**

*Recreational video tour*

<https://www.townofsilvercity.org/>

Silver City/Grant County Chamber of Commerce

<http://www.silvercity.org/>

800-548-9378

Rendezvous Manager: Cheryl Roth

575-263-1845

[CherylDRoth@gmail.com](mailto:CherylDRoth@gmail.com)