

Gila Chapter

Back Country Horsemen of New Mexico | MINUTES

6/18/2024 6:00 PM | Grant County Extension Office

Meeting called by	Matt Rehani	Attendees
Type of meeting	Monthly business meeting	Joan Bacon, Cindi deCapiteau, Dave Imler, Nancy Imler, Mickey Lemon, Rawlings Lemon, Matt Rehani, Laurie Wlosinski
Note taker	Cindi deCapiteau	

AGENDA TOPICS

Approval of minutes | Presenter Matt Rehani

Last week, Donna Tillmann commented to the secretary about an error in the secretary's account of equine protozoal myeloencephalitis (EPM) in the GBCH minutes from May 2024. Equines, Donna advises, do not acquire EPM by eating feces infected with the pestilential protozoa, but rather by ingesting water, forage, or feed that is contaminated with such feces.

Financial & membership report | Presenter Dave Imler

Income:

Give Grandly	\$1,819.38
Dues	\$40.00
Rendezvous	\$200.00

Expenses:

Trail project food & supplies	\$2,648.45
-------------------------------	------------

Balances:

Checking	\$51,285.71
Savings	\$50,150.00

Two new members joined GBCH. They are Jedediah Murphy and Elizabeth Prince. Their membership is effective through 2025, beginning in 2024.

Some members report they aren't receiving the BCHA national newsletter. Joan will look into it. Pat Buls says she doesn't get GBCH emails. Matt will look into the names on the email list.

Action items

Person responsible

Find out why some members don't seem to be on the mailing list for BCHA	Joan Bacon
Review GBCH email list and make sure Pat Buls' information is present and accurate	Matt Rehani

Agenda topic *Recap of Gila Centennial* | **Presenter** *Matt Rehani*

The Gila Centennial celebration down at Gough Park a couple of weeks ago went well. The event was coordinated by the Forest Service, supported by the good faith and credit of federal dollars, as evidenced by a dozen or so portable toilets, effective organization, stout equipment for various activities, speakers, and lots of chairs. USFS staff and firefighters from all over the west helped out and participated in a cross-cut saw competition. Those sawyers (men and women) can really whale on a fat log. Smoky Bear waddled around and helped serve the official Gila birthday cake.

GBCH did the cookie-branding thing. A good time was had by all.

Plan for July Picnic | **Presenter** *Matt Rehani*

Each year GBCH hosts a summer picnic for members, USFS personnel, and trail workers. The 2024 event will occur on **Tuesday, July 16 at the Gomez Peak Pavilion**, which Matt Rehani has already reserved. **Setup begins at 4:00.**

The tentative plan is for GBCH to cater pulled pork, brisket, and chicken, as well as iced tea and coffee and to supply dishes and utensils. Attendees bring side dishes and desserts and soft drinks. Matt will send out an email announcement with the object of finding out how many people plan to join in the food and festivities.

Matt will ask Melissa to invite trail project hikers. He will also contact Gerry and Melissa and ask them to reach out to the Forest Service. Trail crew hikers and other invitees can bring a side dish, but they aren't obligated to do so.

We'll need to get RSVPs from everybody who's attending.

Action items

Person responsible

Contact caterer, order food

Matt Rehani or designee

Extend invitation to USFS

Gerry Engel, Melissa Green

Extend invitation to trail project hikers

Melissa Green

Public Service | **Presenter** *Matt Rehani*

Melissa is preparing list of accomplishments for spring 2024. She is also working on the fall trail project schedule. Fall trail work starts around late August.

The recent trail projects up in the Gila wilderness (Mineral Creek, Gilita Creek, and Clayton Mesa) were staffed by 19 high school kids from Santa Fe. They worked like beavers and did a great job. Gerry had planned a trip from Willow Creek, but the kids took care of it, so Gerry cancelled the work. (Perhaps this relates to a matter mentioned below?)

Grant County SAR update | **Presenter** *Laurie Wlosinski*

Laurie Wlosinski reported on a statewide search and rescue conference recently held in Socorro. The Santa Fe sheriffs were there and offered the use of their new articulated dead body manikin (a.k.a. "Dead Bob") (for use in SAR training). If we split the cost the sheriffs will let us borrow him. The idea is to obtain the manikin in time for a demonstration and practice at the Rendezvous in September, or at a future GBCH meeting if September isn't possible. Laurie will advise us if she can get Dead Bob.

Action items

Person responsible

Schedule Dead Bob

Laurie Wlosinski

BCHNM hasn't done anything lately, according to Joan and Cheryl. The next state meeting will be in August.

Cheryl reported on developments for September's BCHNM Rendezvous to be held at Ft. Bayard (Thursday-Sunday, September 19, 20, and 21. Cheryl has received three registrations so far.

Planning for the Rendezvous is in the early stages, but will ramp up beginning in July. Your contributions will help make the event a success, so stay tuned and be prepared to add your energy and enthusiasm.

Everybody who plans to attend the Rendezvous must register. See page X for the registration form and more details about this fun and educational gathering.

Action items

Person responsible

Deadline

Fill out and mail registration form and a check (\$40 per person)

Rendezvous attendees

September 8, 2024

Concerns About Membership | **Presenter** Cindi deCapiteau

Cindi expressed concern about the diminishing member participation in GBCH activities (e.g., monthly meetings, trail projects) and sought ideas on what to do about it.

To illustrate the matter, GBCH membership for 2024 is down by 20 people over 2023. The last couple of monthly meetings have been attended essentially only by members of the board of directors and associated movers and shakers. On the last spring trail project, Melissa and Cheryl were the only GBCH members who came along; all the rest of the workers were hikers.

The group at tonight's meeting identified the following challenges:

- BCH people would rather go out on their horses, but aren't inclined to hike. (A couple of the 2023 spring projects were advertised as unsuitable for travel by stock, so there's that...)
- Families are challenged by the need for parents who have jobs, so it's difficult for kids to participate with horses because of expenses and logistics.
- Mickey Lemon speculated that people might be inclined to attend meetings if we resume the education segments; Cheryl (the education segment coordinator) commented that she needs to be sure enough people will attend to make it worth the efforts of a speaker to prepare and deliver information.
- Someone mentioned that participation might be reduced because of summer vacations, etc., and might pick up in the fall.
- Melissa set up the spring project schedule around monthly meeting dates, which used to be on Wednesday but had to be changed to Tuesday after the schedule was published so GBCH could use the meeting room at the Grant County Extension Office. That required some members to be out on the trail during the time meetings were held.
- Many trail projects can be handled by just two or three people. The Imler men and George Siavalis have been working on the trail from Sheridan Corral for years outside of Melissa's scheduled projects. Dave Imler, Mike Natharius, and Gerry worked up at Lilly Park.
- Gerry Engel is considering the possibility of establishing a committee to handle membership recruitment and retention.
- The trail schedule, which is always available at <https://www.gilabch.org/>, needs to be more widely distributed (for example, copies left at the library and feed stores and distributed directly to the membership email list).
- Members need to know they can reach out to Gerry and Melissa, who are easy to get ahold of (via phone, text, email) for answers to questions and information about projects.

- A couple of questions on a member survey could reveal the barriers members face to participation (we did this once before; the effort resulted in a robust gang of cooks to prepare trail food). The survey could also solicit input from members about ways to increase participation.

GBCH members! How about it?

Announcements |

Next Meeting: Tuesday, July 16, 4:00 p.m. Gomez Peak Pavilion



2024 RENDEZVOUS
BACK COUNTRY HORSEMEN OF NEW MEXICO
 HOSTED BY THE GILA CHAPTER
 Ft. Bayard National Historic Landmark
 26 Calle El Centro
 Santa Clara NM 88026

THURS. SEPT. 19 - SUN. SEPT. 22, 2024

REGISTRATION FORM

LAST NAME: _____ CHAPTER AFFILIATION: _____

FIRST NAME(S) (use reverse to add more names): _____

MAILING ADDRESS: _____ CITY: _____ ZIP: _____

PHONE: _____ CELL: _____ EMAIL: _____

REGISTRATION FEE: \$40.00 PER PERSON Number of participants _____ x \$40 = \$_____ The fee includes non-electric camping, water for horses, toilets. You will need to bring electric fencing, panels, or other means to secure your equine(s), potable water for your own consumption, and buckets for your equine(s). There is no dump station on site, but a nearby KOA has one and will charge a fee for the service.

SCHEDULE AND ACTIVITIES:

Thurs. 19th	Noon	Arrive (parking patrol will direct you to a space) Check-in at the Theater
	5:00 pm – 8:00 pm	Appetizers in the theater, meet and greet, speaker from Santa Clara
Fri. 20th	All day	Continue check in and purchase raffle tickets
	10:00 am - 4:30 pm	Turn in chapter auction items Group rides Ft. Bayard tour
	5:00 pm – 8:00 pm	Forest Service speaker
Sat. 21 st	10:00 am - 4:30 pm	Group rides
	4:00 pm - 5:00 pm	Set up dinner and silent auction
	5:30 pm - 6:30 pm	Dinner in the theater Complete silent auction
	6:30 pm	State meeting Finish raffle and other fundraisers
Sun. 22 nd	6:00 am - 8:00am	Coffee and donuts in the theater
	9:00 am	Short rides (optional) in the morning, clean-up, load-up, and check-out.

Please bring your own chairs and buckets (for equines).
You are responsible for cleaning up your campsite. A dumpster for manure and trash will be provided.
BCHNM policy: Stallions, dogs, cats, and other pets are not permitted on rides.
Groups are limited to ten riders or fewer, but no one rides alone.

Liability Waiver

I/We realize inherent risks are involved in all activities with equines. I/We hereby release BCHNM and its Officers, Directors and Membership, BLM, the village of Santa Clara, and the United States Forest Service from liability for any accident, injury, or death that may occur to myself/ourselves or my/our equine by participation in any Back Country Horsemen of America activity. In accordance with EQUINE LIABILITY ACT [42-13-1 NMSA 1978).

I/We further understand that I/We are fully responsible for our minor children and release BCHNM of any and all liability for any accident, injury, and/or death of any minor child. Children under the age of eighteen (18) years are not allowed to participate in any BCHA activity unless accompanied by a parent or legal guardian.

Signature of adults and/or guardians: _____ (Signature) _____ (Signature)

Registration must be received by September 8, 2024
Make checks or money orders payable to: Gila BCH of New Mexico
Mail registration and fee to: Gila BCH, PO Box 533, Silver City NM 88062



2024 RENDEZVOUS

BACK COUNTRY HORSEMEN OF NEW MEXICO

HOSTED BY THE GILA CHAPTER

Ft. Bayard National Historic Landmark

26 Calle El Centro

Santa Clara NM 88026

THURS. SEPT. 19 - SUN. SEPT. 22, 2024



Welcome!

Information about the 2024 BCHNM Rendezvous.

The Rendezvous is an annual event hosted by a selected chapter of the Back Country Horsemen of New Mexico. The members of the Gila chapter are honored to host the 2024 event, which will be held at Ft. Bayard, in Santa Clara, New Mexico.

Registration

The Rendezvous registration form is included with this document. Please fill it out completely and use the blank side to supply names of additional participants.

Mail the form to: Gila BCH
PO Box 533
Silver City NM 88062

Your registration form and fees must be received by September 8, 2024. Make checks payable to Gila Back Country Horsemen.

About Ft. Bayard

Fort Bayard was established in 1866 to protect travelers and settlers from interference by Apache Indians along a stagecoach trail that ran from Arizona into New Mexico. The fort was garrisoned by the "Buffalo Soldiers," US Army regiments composed primarily of African Americans, formed during the 19th century to serve on the American frontier.

Following the end of the Apache wars in 1886, Fort Bayard's continued usefulness came under scrutiny and the fort was subsequently deactivated. However, U.S. Army Surgeon General George Miller Sternberg, noting the excellent health record of the post, chose Fort Bayard as an Army tuberculosis hospital and research center.

The State of New Mexico took control of Fort Bayard in 1965. In 2001, the fort became an Historic District and in 2004 Fort Bayard was designated a National Historic Landmark. The Village of Santa Clara now has a 99-year lease on the Ft. Bayard grounds. Santa Clara has undertaken a plan to establish the property as an historical park that serves visitors to the Silver City area. Santa Clara's authorization of the BCHNM 2024 Rendezvous is part of that effort.

Santa Clara does not charge a fee for the use of its Fort Bayard grounds, but please donate to thank the village for the use of its great facility.

Beyond Ft. Bayard's northern border is the Gila National Forest, which provides access to numerous scenic trails that traverse an area of three million acres of public forest and wilderness.

Things to Do

Visitors to Ft. Bayard have opportunities to learn about western history, to appreciate the work of a robust art community, hike, ride horses or bicycles on a trail system that explores territory both gentle and rugged. Much of the territory in the Gila Forest operates under US Forest Service vehicle restrictions, but the main route north (Ft. Bayard Road) leads to trail heads and vehicle parking.

In addition to recreational trails, the park also affords a frisbee golf course, museum, the Ft. Bayard National Cemetery, and the Bataan Memorial Park, which features a playground, baseball diamonds, and a pole-mounted helicopter.

Note that Ft. Bayard is a public space and will not be exclusive to the Rendezvous. Be aware that non-Rendezvous people will be using the trails for hiking, running, and horse riding. You will find a high degree of courtesy among the other visitors that will inspire you to return friendly greetings and consideration. Rules about the rights-of-way for horse users are well-known and respected.

The town of Silver City is the headquarters for the Forest Service's Silver City District and is the Grant County government seat. Western New Mexico University lies on the west end of town and offers education in the technical trades and liberal arts. Silver City also has a post office, convention center, the Murray Ryan Visitor Center, several banks, laundry facilities, auto repair and trailer services, diesel and gas fuel stations, a WalMart, and shopping for animal feed, groceries, electronics, and (best of all) the works of local artists.

The Silver City Museum explores the diverse history and culture of southwestern New Mexico. Western NM University's museum in Fleming Hall features an extensive collection of ancient Mimbres pottery.

Gough Park is a city-block-sized area of trees and lawn grass, with restrooms and nearby parking. The Big Ditch is a waterway that splashes between Hudson and Bullard Streets and is a refreshing place to hide from a hot day and to watch birds and squirrels frolic. A variety of restaurants and refreshments are provided on Bullard Street, as well as Our Paws' Cause, a big thrift store for the High Desert Humane Society.

If you attend the Rendezvous with family and friends who will not be riding, Silver City has much to offer, so nobody needs to be bored and restless.

Rendezvous Facilities

During the Rendezvous, we will have access to the Fort Bayard Theater for indoor restrooms (no showers) and a large gathering space for meals and meetings. The Rendezvous will provide a large dumpster for manure and trash, as well as strategically located troughs and water for horses. You need to supply your own potable water, however.

Santa Clara is not charging us for camping, but offers no hookups for water, sewer, or electricity, so be prepared for primitive camping with trailers and equines. There is no dump station at Fort Bayard, but a nearby KOA has one, for which you will be charged a usage fee.

When You Arrive

Ride headquarters are located in the Ft. Bayard Theater (see map). Please check in there to register and receive directions to your camping spot. Volunteers will be available to help park your rig and set up your campsite and secure your animals.

Securing Your Equines

No pens, shelters, or hitch rails are available at Fort Bayard, but there are trees for highlines and plenty of space for panels, electric fences, or picket lines. You can also tie your equines to your trailer. Equines must be contained in one of these ways; hobbles alone are not sufficient.

Bring With You

- Extra toilet paper
- Buckets for your equines
- Table (optional)
- Chairs
- Personal item to sell at your site; 10% of proceeds to BCHNM (saddle, headstall, blanket, western art, whatever you want to sell)
- Please bring an appetizer to share in the Theater on Thursday evening.

Group Meals

Appetizers and ride sign-up sheets will be on hand for the meet-and-greet on Thursday evening in the Theater. You provide your own dinner. On Friday, dinner is on your own, but you are welcome to bring your food to the Theater to socialize. Saturday will feature a catered dinner, and on Sunday morning we will offer coffee and donuts.

Do's and Don'ts

- Dogs must be on leash at all times unless confined to a cage or trailer
- Stallions are not allowed
- Campfires are permitted at the blacktop at north end of the campsite. You must supply fuel and a fire ring
- Weed-free hay not required

- Cell service is available
- But most of all, DO have fun!

Fundraisers

The Rendezvous is a fundraising event for the Back Country Horsemen of New Mexico and the Village of Santa Clara. You will have several opportunities to donate and participate in the fun.

- Silent auction: Each chapter provides an item for the silent auction. All proceeds to BCHNM.
- 50/50 Raffle: Individuals purchase raffle tickets and receive 50% of proceeds if their ticket is drawn, with 50% BCHNM.
- Guess how many cookies in the jar: Individuals can purchase a chance to guess the number of horse treats in a jar. Fifty percent of proceeds to BCHNM; you keep the rest.
- Guess the horse's weight: Two equines will be presented so you can purchase a chance to guess its weight. Fifty percent of proceeds to BCHNM and you keep the other 50%.
- Personal sales: Individuals can bring items to sell at their campsites. Ten percent of the proceeds to BCHNM and you keep 90%.
- Donation jar for Santa Clara. All proceeds go to the Village of Santa Clara in appreciation for our use of its Ft. Bayard facilities.

Farrier and veterinarian

A farrier will be available (at your cost) for shoeing and hoof emergencies. Glen Geesaman 575-313-9998

There are three veterinarian practices in Silver City. Treatment is available for both large and small animals.

Maps

Maps of Ft. Bayard and its recreational trails are included with this document. The maps will also be available at the ride headquarters (in the Ft. Bayard Theater), along with a map of Silver City.

Clean-up

All participants must maintain a clean campsite. Leave your site in the same or better condition as you found it. Place trash and manure in the dumpster provided.

Directions

From the north: I-25 to exit 41 at Hatch. Head south on New Mexico Highway 26 to the T intersection near Deming at US Highway 180 (about 48 miles). Turn right on 180 for about 50 miles to the second light past Bayard and follow signs to ride headquarters.

Caution: Along I-25 are signs that indicate a route to Silver City via NM Highway 152. Don't fall for it. The route climbs a mountain range over Emory Pass by way of a narrow and twisty road that is difficult for trailers and large rigs.

Rendezvous Schedule

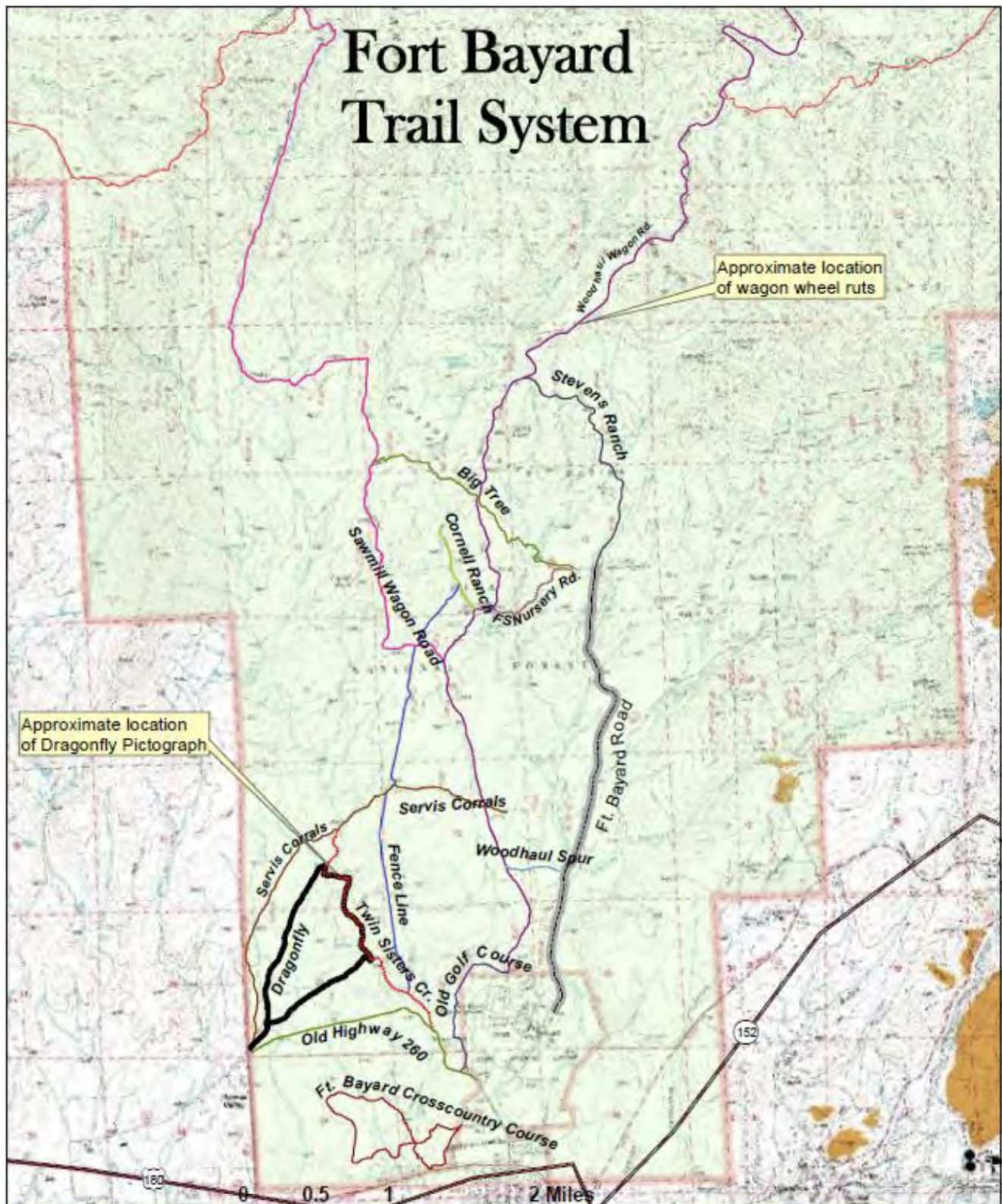
Thurs. 19th	Noon - 5:00 p.m.	<p>Arrive</p> <p>Check in at Ride Headquarters in the Ft. Bayard Theater</p> <p>The Ride parking patrol will direct you to a campsite and a place to secure your animals</p> <p>After you get settled, relax, tour the facilities, or ride on your own (see Ft. Bayard Trail map, on page 6)</p>
	5:00 p.m.	<p>Trail bosses will describe the trail rides they will lead (in the Theater)</p> <p>Sign up for rides</p> <p>Appetizers in the theater, meet and greet, discuss fundraisers</p> <p>Speaker: Santa Clara Speaker/Mayor and/or Administrator</p>
Fri. 20th	All day	<p>All meals on your own</p> <p>Sign up for Friday rides</p> <p>Continue check in and purchase raffle tickets</p>

	9:30 am - 4:30 pm	Turn in silent auction items Group rides Ft. Bayard tour
	5:00 pm - 8:00 pm	Dinner on your own in the Theater Participate in fundraisers Sign up for Saturday rides Forest Service speaker Breakfast and lunch on your own
Sat. 21 st	9:30 am - 4:30 pm	Group rides
	4:00 pm - 5:00 pm	Set up dinner and silent auction
	5:30 pm - 6:30 pm	Dinner in the theater Complete silent auction
	6:30 pm	State meeting Finish raffle and other fundraisers
Sun. 22 nd	6:00 am - 8:00am	Coffee and donuts in the theater
	9:00 am	Short rides (optional, on your own) in the morning, clean-up, load-up, and check-out.

Map of Ft. Bayard



Fort Bayard Trail System



Ft. Bayard Trails:

- | | | |
|----------------------------|------------------------------|------------------------------------|
| — Big Tree TrNo755 | — Dragonfly Loop TrNo720 | — Woodhaul Spur TrNo55C |
| — Woodhaul Wagon Rd TrNo55 | — Twin Sisters Creek TrNo726 | — Old Hwy 260 TrNo260 |
| — Stevens Ranch TrNo756 | — Fence Line TrNo727 | — Old Golf Course TrNo723 |
| — Forest Nursery TrNo757 | — Servis Corrals TrNo725 | — Ft Bayard CrossCountry Course Tr |
| — Cornell Ranch TrNo758 | — Sawmill Wagon Rd TrNo243 | — Forest Boundary |



Fort Bayard Trail System - Day Use Only

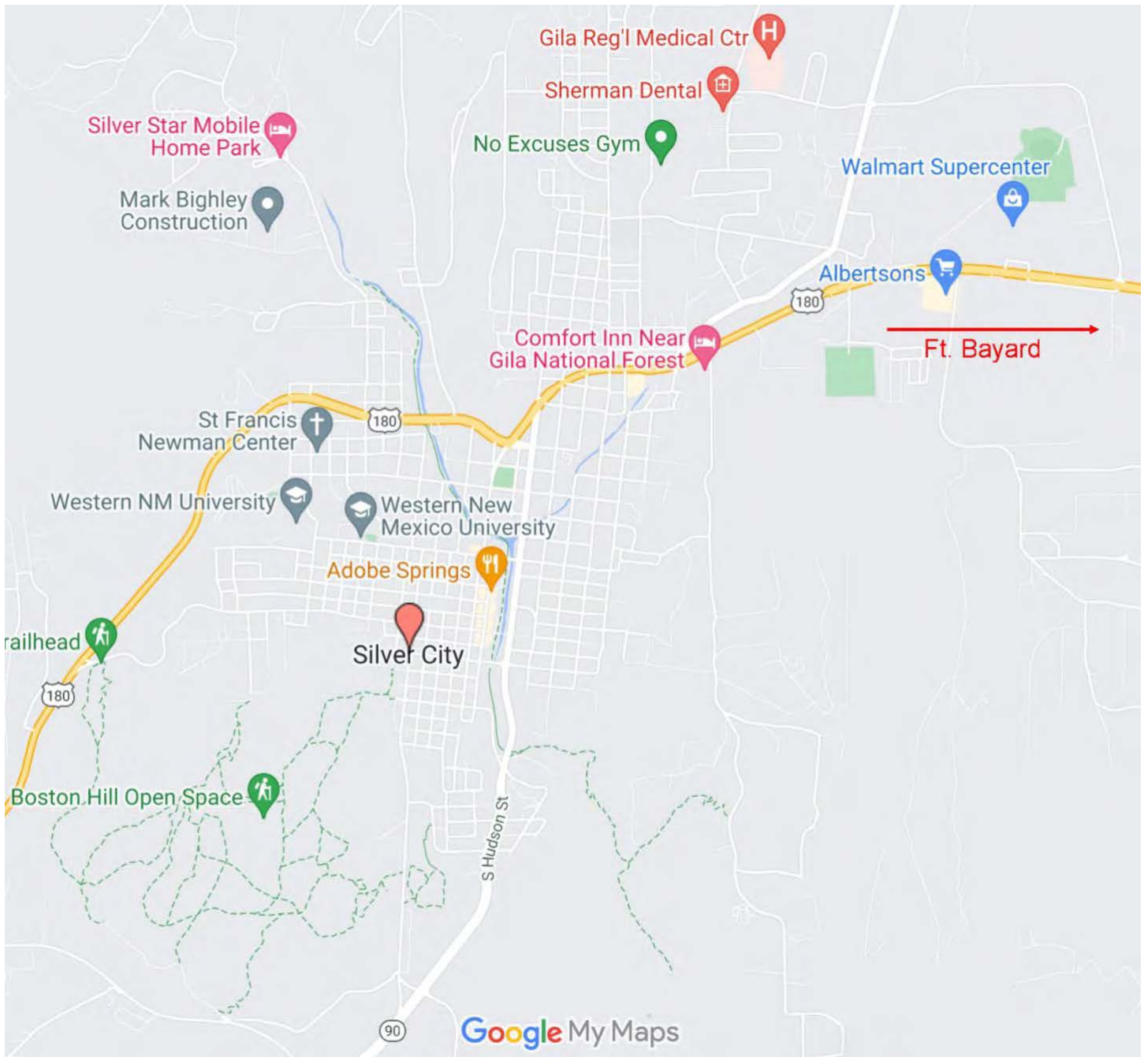
TRAIL NAME	NO.	MILEAGE	LEVEL	DESCRIPTION
BIG TREE TRAIL	755	2 MILES	EASY	Varied landscape, popular trail but still sense of openness, popular destination being Big Juniper Tree
WOODHAUL WAGON RD. TR.	55	11.5 MILES	MODERATE TO DIFFICULT	One leg of various loops from Big Tree Trailhead. Connects to Signal Peak Trail system. Popular destination: old wagon wheel ruts just north of junction with Stevens Ranch Trail No. 756.
SAWMILL WAGON RD. TRAIL	243	7 MILES	MODERATE	One leg of various loops from Big Tree Trailhead. Connects to Continental Divide Trail system.
FOREST NURSERY RD. TRAIL	757	¼ MILE	MODERATE	Old route taken by wagon to water nursery plants from Cameron Creek. Popular route with cyclists and equestrians.
STEVENS RANCH TRAIL	756	2 MILES	MODERATE	Old service road used to access water system for old Fort Bayard. One leg of various loops from Big Tree Trailhead. Heavily wooded in some locations. Wildlife sightings are common on this route.
CORNELL RANCH TRAIL	758	¾ MILE	MODERATE	Short trail that connects Sawmill Wagon Rd Trail to Cameron Creek. A possible leg for a loop to Big Tree Trail.
DRAGONFLY LOOP TRAIL	720	3 MILES	MODERATE	Very popular loop accessed by Dragonfly Trailhead in Arenas Valley. Popular destination: various pictographs at Dragonfly site. Water often found in Twin Sisters Creek.
OLD HWY 260 TRAIL	260	2 MILES	EASY	Wide easy hike from the Dragonfly Trailhead. Asphalt roadbed from old highway leads to Twin Sisters Creek. One leg of a loop with Twin Sisters Creek Trail. Gradual altitude gain means nice vistas of Old Fort Bayard, game refuge, and surrounding mountains.
TWIN SISTERS CREEK TRAIL	726	2 MILES	MODERATE	One leg of a variety of loops from Dragonfly Trailhead. Varied landscape weaving in and out of the Twin Sisters Creek drainage. Often water found in Twin Sisters Creek.
FENCE LINE TRAIL	727	2.5 MILES	DIFFICULT	Steep, sometimes rocky trail that forms one leg of a variety of trails. Original trail was formed by cattle and horse traffic along the pasture fence line. Consistent sun exposure making a good winter trail route.
SERVIS CORRALS TRAIL	725	3.25 MILES	MODERATE	Trail that leads to the Servis Corrals – named for Sam Servis. Servis worked on the Gila NF from 1952 – 1967. He spent a lot of time out at Fort Bayard with the FS horses and mules, and they were kept in the Antelope pasture. This trail forms one leg of a variety of loops originating at Dragonfly Trailhead.
WOODHAUL SPUR TRAIL	55C	1/3 MILE	EASY	A short user-created trail that passes through open grassland and gains easy access to the Woodhaul Wagon Rd. Trail from the main Ft. Bayard Road.
OLD GOLF COUSE TRAIL	723	1 MILE	EASY	This trail circumscribes the old Fort Bayard Golf Course used by fort residents since the turn of the century when the officers and soldiers teed-off.
FORT BAYARD CROSS COUNTRY TRAIL	722	3	EASY	This trail was originally created for use by Cobre HS Indian Cross Country Team from the neighboring town of Bayard. It is exactly 3 miles long and follows a weaving route near the Bataan Memorial Park in Santa Clara. It is accessed at the back of the park.

Fort Bayard Trail System - Day Use Only

Note: For more detailed trail information of the Fort Bayard Trail System and surrounding area, the following USGS topographic quadrangle maps are recommended: Fort Bayard; Twin Sisters; Allie Canyon

USGS topographic quad maps can be purchased from the US Geological Survey:
<https://store.usgs.gov/> or by calling toll-free 1-888-ASK-USGS (1-888-275-8747)

Map of Silver City



Local Resources

Arenas Valley Animal Clinic

Skilled veterinary services for large and small animals

11865 US 180 E

Arenas Valley, NM 88022

<https://www.arenasvalleyac.com/>

575-388-1993

Town and Country Veterinarian Clinic

High quality, thorough, and friendly service for large and small animals

2035 Memory Lane

Silver City, NM 88061

<https://townandcountryvetsc.com/>

575-538-3700

Dr. Jenica Laney, DVM

Mobile only

575-519-0503

Silver City Museum

Explore the diverse history and culture of southwestern New Mexico

312 W. Broadway St.

Silver City NM 88061

<https://www.silvercitymuseum.org/387/About-the-Museum>

575-538-5921

Western New Mexico University Museum

Home of the world's largest and most complete Mimbres pottery and artifact collection

Light Hall Theater

1000 W. College Ave.

Silver City NM 88061

<https://museum.wnmu.edu/?lang=en>

575-538-6386

Faywood Hot Springs (reservations required)

Hot mineral spring, public & private Pools a rustic natural geothermal resort

65 New Mexico Highway 61

Faywood, New Mexico 88034

<https://faywoodhotsprings.com/>

575-342-8181

Gila Hot Springs Campground

Camping and natural hot spring pools beside the Gila River

HC 68 Box 80 (40 miles north of Silver City on NM Hwy 15)

<http://gilahotspringscampground.com/>

Silver City, NM 88061

Gila Cliff Dwellings

Homes and lives of the people of the Mogollon culture who lived there from the 1280's through the early 1300's

26 Jim Bradford Trail (44 miles from Silver City on NM Hwy 15)

Mimbres, NM 88049

<https://www.nps.gov/gicl/index.htm>

575-536-9461

Catwalk Recreation Area

A half-mile-long bridge suspended over Whitewater Creek

5 miles from Glenwood, NM, at the end of NM Hwy 174 (Catwalk Road)

<https://www.fs.usda.gov/recarea/gila/recarea/?recid=2029>

Phone: (575) 539-2481

City of Rocks State Park

A geologic formation of sculptured rock columns separated by paths or lanes resembling city streets

327 Hwy 61

Faywood, NM 88034

<https://www.emnrd.nm.gov/spd/find-a-park/city-of-rocks-state-park/>

575-536-2800

Cosmic Campground International Dark Sky Sanctuary

Offers a 360-degree, unobstructed view of the night sky for exceptional stargazing opportunities

60 miles north of Silver City on US Hwy 180

<https://www.fs.usda.gov/recarea/gila/recarea/?recid=82479>

575-539-2481

Murray Ryan Visitor Center

Pick up a Silver City Trail Map

201 North Hudson Street

Silver City, NM 88061

<https://www.visitsilvercity.org/trail-brochure.html>

575-538-5555

Town of Silver City

Recreational video tour

<https://www.townofsilvercity.org/>

Silver City/Grant County Chamber of Commerce

<http://www.silvercity.org/>

800-548-9378

Rendezvous Manager: Cheryl Roth

575-263-1845

CherylDRoth@gmail.com